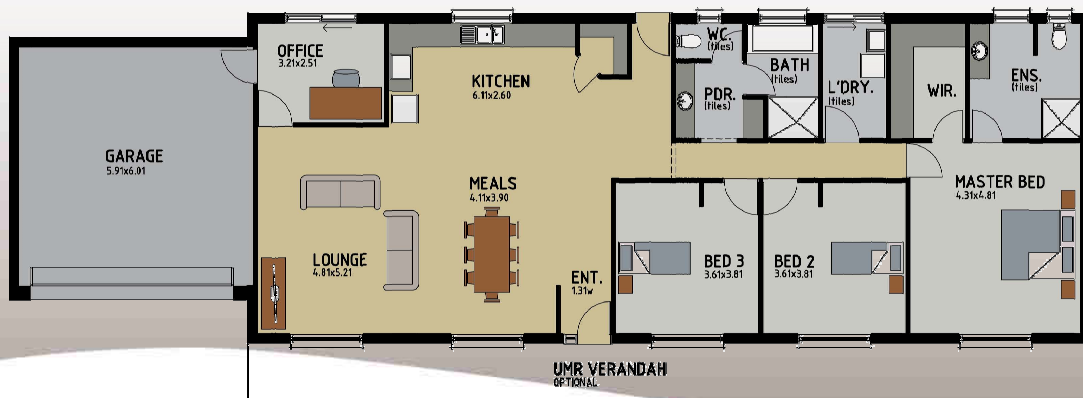


# WAHLSTEDT QUALITY HOMES

## Gawler



- 3 Bedrooms plus study
- 2 Bathrooms
- Master bedroom with ensuite & walk in robe
- Designer Kitchen with walk in pantry
- Your Choice of Steel or Timber Frame
- Stainless Steel Blanco Appliances
- WQH Deluxe Specifications
- WQH Quality Workmanship



Width 27.20 m  
Depth 8.29 m

For Quality, Service and Peace of Mind...  
*Choose Wahlstedt Instead*

Visit [wqh.com.au](http://wqh.com.au) for more quality designs.  
We can also custom build to your plans.

[wqh.com.au](http://wqh.com.au) 1300 950 335

Multi-award winning Builder with over 25 years experience

BLD 148938

find us on facebook



Six time HIA award winners



\*All areas are approximate. Elevation and floor plan for illustration purposes only. E&OE. Refer to website for details and or terms & conditions.